

S-500

BEAUTIFULLY
ENGINEERED
ALUMINIUM
DOORS



SCHÜCO



**SPITFIRE
DOORS**

MAKE A GRAND ENTRANCE



S-500. WHERE FORM MEETS FUNCTION

AGE 1584

The S-500 Series, Spitfire's flagship range of beautiful designer entrance doors, represents the largest range of aluminium residential doors in the world and the most sought after in Europe, having established an unrivalled reputation in the uncompromisingly demanding markets of Germany, Austria and Switzerland.



AAE 1190



AA 236



SPITFIRE DOORS

MAKE A GRAND ENTRANCE



These beautiful designer entrance doors also seamlessly fuse outstanding aesthetic appeal with state-of-the-art engineering being meticulously constructed with substantial aluminium sections from Schüco combined with German-engineered precision locking systems.

A 20mm thermally-broken aluminium low threshold with concealed fixing locations comes as standard. While all models incorporating glass feature triple glazing with

laminated safety glass. All models are available with fingerprint unlocking or automatic key fob opening, plus built-in LEDs in the sidelights and handles, with a choice of over 30 luxurious wood, textured or carbon fibre effect finishes.

Providing you with the perfect synthesis of beauty, technology, security, insulation, durability and exclusivity.

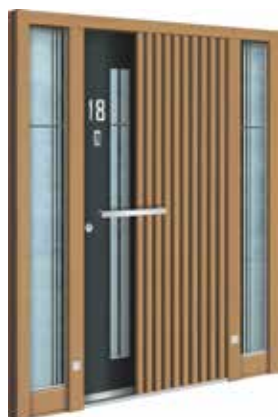
ENTER THE EXCLUSIVE WORLD OF SPITFIRE DOORS

Spitfire Doors was originally established in response to the increasing demand for exclusive, secure, beautifully engineered aluminium doors and currently offers the widest range of high-end aluminium residential entrance doors, with over 600 different door styles to choose from and quality designed to last a lifetime.

All designs are exclusive to Spitfire and, in conjunction with our authorised Design Partners, we offer comprehensive survey and installation coverage right across the UK and Ireland.



AEE 1111



AA 245



AAE 1172

AN ENORMOUS CHOICE, A SMALL SELECTION

With hundreds of beautiful designs to choose from, we can only showcase a small selection here. But we hope that these 30 designs will provide you with a flavour of the scope, extraordinary quality and remarkable aesthetics of our range.



SIMPLE, COMPLEX, LINEAR OR CURVED

With Spitfire, of course, you have the option of buying the exact door that you have seen in one of our Design and Installation Partners' showrooms.

Alternatively, our user-friendly design software will enable you to create your own unique, bespoke design providing you with the flexibility to achieve any design linear, curved or extravagantly complex.

Not only that but current trends are also accommodated since our beautiful aluminium doors can be made on a particularly large, imposing scale up to 1,250mm in width and a whopping 2,700mm in height!

In fact, with such an enormous range to choose from, including doors with sidelights, toplights, double doors and French doors, it's fair to say that there's a Spitfire S-500 door to suit every kind of property, whatever your personal style and taste in décor.

IMPECCABLE STYLE, IMPREGNABLE SECURITY

A casual glance at a Spitfire S-500 door reveals its beauty. And yet the real beauty of a Spitfire door can be found in its engineering. S-500 Series doors are exceptionally strong because their Schüco aluminium sections, unique to Spitfire, come with 3mm walls.

The standard door leaf is a substantial 85mm thick with no less than three layers of security glass and a wide range of state-of-the-art, hi-tech options.

Hardly surprising, then, that every S-500 door conforms to Document-Q regulations as well as being classified as an RC3 pass for exceptional levels of security by the Rosenheim Institute in Germany.





^ A FINGER ON THE PULSE OF TECHNOLOGICAL INNOVATION

The S-500 range offers you no less than seven hi-tech opening options all designed to make life easier. Our remote control keyfob opening, for example, enables you to unlock your front door from up to 30 metres away. Which means that, with Spitfire, fumbling in the dark on the doorstep for your keys can from now on be a distant memory!

Alternatively, our optional built-in fingerprint sensor will open our substantial door in a remarkable 1.2 seconds. This new generation sensor incorporates Siemens technology and can even read data from a moist or greasy finger! The sensor can recognize up to 1,000 fingerprints and the dual relay units allow you to operate another nearby door, such as a garage door, too, all from the one sensor.

The Spitfire touch-screen key pad is easy to use too. You can tap in your desired code or swipe your code, like using an iPhone.

Not only that but we have recently launched handles with a smart spyhole, fingerprint reader and backlit LED built in too.

^ HELPING YOU KEEP A LOOK OUT

It goes without saying that risks to your security can sometimes appear, bold as brass, at your front door. That's why our 'electronic peephole viewer' has become such a popular option for the S-500 range.

Equipped with a camera and an LCD colour monitor, the viewer shows you, in pinsharp clarity, day or night, who's at the door at the press of a button. What's more, viewer operation is undetectable from outside.





AA 243



**SPITFIRE
DOORS**

MAKE A GRAND ENTRANCE





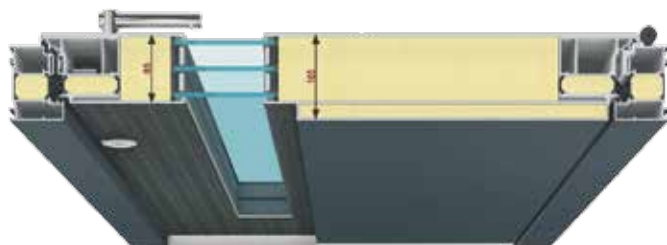
LOWER U-VALUES, LOWER ENERGY BILLS

Just to get a little technical for a moment, U-values are used to measure how effective building products are in preventing heat being lost from inside a building.

In a nutshell, the lower the U-value of a door, the more slowly heat can escape through it, which means the door provides better insulation so that less energy, and therefore of course less money, is needed to heat your home.

And Spitfire aluminium doors easily outperform composite doors with U-values as low as $0.67 \text{ W/m}^2\text{K}$ (trust us, that's low!)

Which means, to sum up, that these doors will both look great and keep you safe, reducing your domestic running costs and protecting the environment both inside and outside your beautiful new front door.

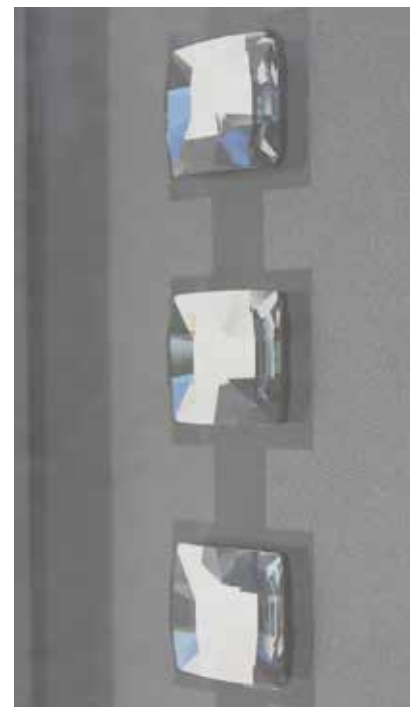


PASSIV HAUS

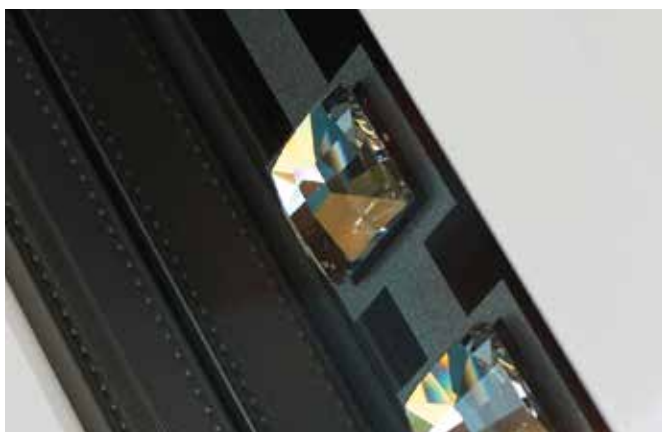


INNOVATION AND ANTI-EXPANSION

With our aluminium walls and aluminium Schüco profiles all at 3mm thick, the stability of each door is a given. Combine this with Schüco hi-security barrel hinges and our patented sash design with a special anti-expansion layer that's unique to Spitfire and you have a door that resists distortion even under the most severe of weather conditions.



SPARKLE AND SPEC



As the ultimate touch of luxury for your new S-500 door, we're now adding a little sparkle. With Swarovski® crystals.

To give your front door that extra touch of individuality we can subtly incorporate stunning Swarovski® gems inside your door's glass panel or you can even choose our special vertical handle featuring a magnificent single crystal. For over 120 years, Swarovski® crystals have been adding a touch of bling to everything from jewellery all the way through to... well... front doors!

So make your grand entrance grander still. After all, it's a Spitfire door so, as they say, it's worth it!



AGE 1343

ENDURING BEAUTY

Each S-500 Series door comes with a baked-on powder coated paint finish to guarantee colour stability, weather resistance and low maintenance plus triple seals helping to keep the very worst of our climate's vagaries at bay.

There's a choice of hundreds of RAL colours, in gloss, matt, metallic, textured, dual coloured, multi-coloured or even incorporating a subtle sparkle effect, along with 20 wood effects and many textured finishes, including rust and concrete.



SPITFIRE
DOORS

MAKE A GRAND ENTRANCE



AGE 1094



AA 243



AA 200



AEE 1111



AAE 1173



AGE 1103



AAE 1194

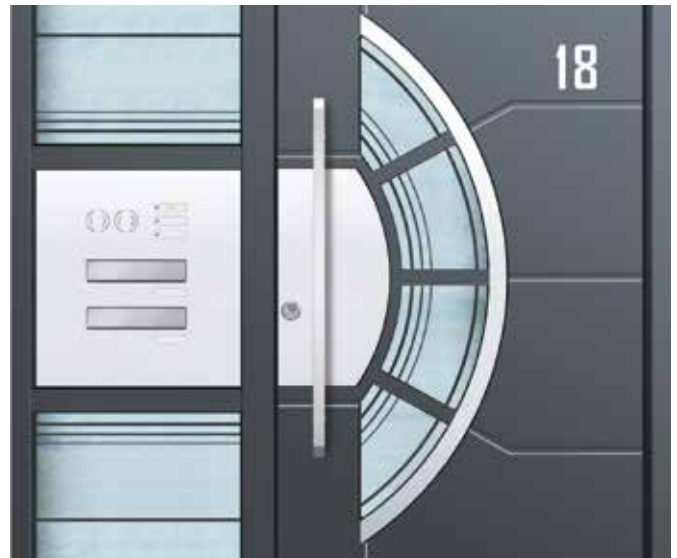


AAE 1165

DECISIONS, DECISIONS

In addition to the myriad of options available in terms of style, finish and security, the S-500 Series also comes with a choice of glass and handles so it's fair to say that there really is a Spitfire S-500 front door to suit every property.

Not only that but, when you order an entrance door from Spitfire, we explain all these options to you. And, whatever options you choose, we deliver your door ready fitted with your chosen extras in the finish of your choice.



'Renz' Letterbox Solution



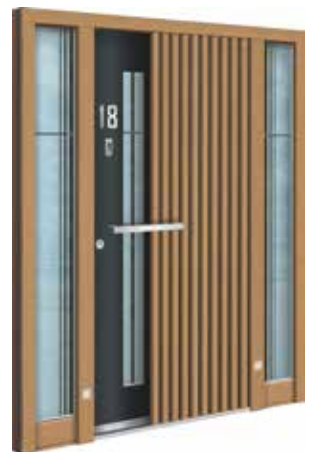
AAE 1164



AAE 1172



AAE 1046



AA 245

OUR SHOWROOM PARTNERS. SELECTED AND AUTHORISED BY SPITFIRE

You'll be in good hands with our Design Partners. Because Spitfire Doors has appointed a national network of over 30 authorised Design and Installation Partners, many with showrooms, so you can get up close and personal with the Spitfire range for yourself. Our Partners can discuss your requirements, measure up your property and install your beautiful new front door without fuss or mess.



Contact the Spitfire team and we'll put you in touch with your nearest Spitfire Partner.

Spitfire Doors,
Dogrose Hangar, Unit 1, Queens Avenue,
Macclesfield, SK10 2BN.

01625 412 570

sales@spitfiredoors.co.uk

spitfiredoors.co.uk

SCHÜCO

Your local Design Partner:



**SPITFIRE
DOORS**

MAKE A GRAND ENTRANCE