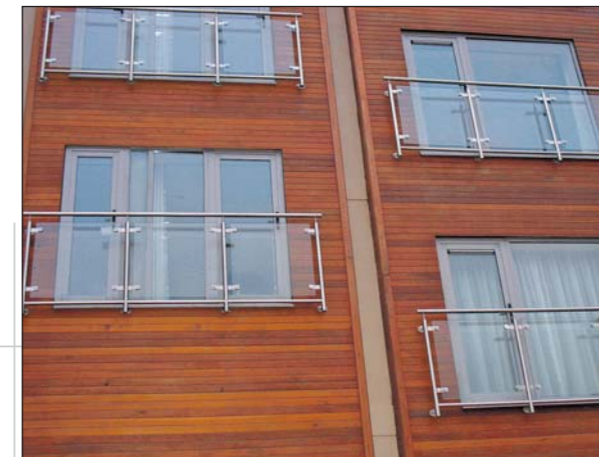
 TS66 energy window system



AMS : Wallingstown : Little Island : Cork : Ireland : Tel : 00353 21 4705100 : Fax : 00353 21 4705199 : email : pohara@ams.ie

 [CLICK: www.ams.ie](http://www.ams.ie)

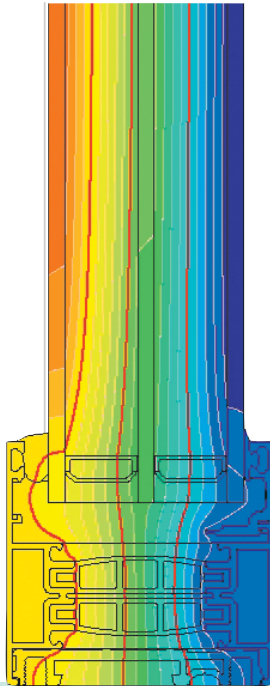


 [CLICK: www.ams.ie](http://www.ams.ie)

TS66 energy window system

AMS TS66 'Energy' window system is a sustainable, energy rated and fully certified window system. The system is 66mm in depth and can be glazed both internally and externally with 28mm through to 48mm units. The system is highly versatile, and has various sash styles which offer excellent design solutions and large sash options.

The system has been tested to BS6375 Parts 1 & 2, security tested to PAS 24:2012 (BS 7950), offers BM Trada 'Q' mark and is secured by design certification. It boasts a heavy duty, category 3 status (20,000 cycles), for repeated opening and closing. Furthermore, the window sample tested was one of the biggest tested by BM Trada in the UK and contained 2 fixed lights, a top hung and side hung opening sash. All this once again proves and reinforces the position that TS66 is one of the leading window systems available on the market today.



Achievable energy labels range from a 'C' rating with a double glazed unit to an 'A' rating with a triple glazed unit and window U-values as low as 1.0 W/m²K.

To further enhance the TS66 system we have introduced a new frame option, namely XT6 200. This frame option greatly improves thermal performance and has been fully tested in line with all the relevant standards and achieved the same results as outlined above.

What AMS is offering is a highly versatile, energy efficient, secure and sustainable window system with excellent performance characteristics ensuring quality and flexibility in design.

Opening options include:

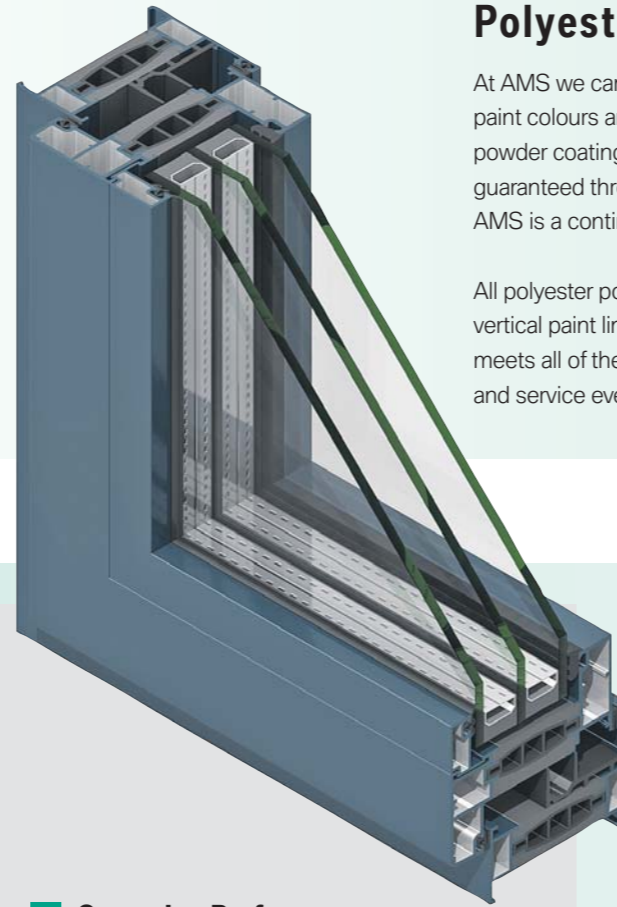
Top hung, side hung, parallel opening, horizontal pivot, vertical pivot, tilt and turn.



Polyester Powder Coatings

At AMS we can help you bring your design to life with our wide choice of paint colours and finishes. We offer a varied range of architectural polyester powder coating finishes, including dual colour as standard, that are guaranteed through the 'Qualicoat' approved applicator scheme, of which AMS is a continuing member.

All polyester powder coating is carried out in house on a state of the art vertical paint line. Our eight stage chromate free pre-treatment process meets all of the latest environmental legislation and ensures a quality finish and service every time.



Advantages:

Quality assured through the BM trade Q mark scheme.

Offers Secured by Design certification

Can take double or triple glazed units from 28mm to 48mm.

U values as low as 1.0 W/m²K, Various sash options available.

Can be internally or externally beaded.

Tested to 1050 Pa on air and 1050Pa on water.

TS66 Energy Window System

Security Performance:

Tested to PAS 24:2012 (BS 7950).

Thermal Performance:

U-values as low as 1.0 W/m²K. Contact our technical department for further information.

Weather Performance:

- :: Tested to BS 6375 - 1: 2009.
- :: Air Classification – A4: 600 Pa & E1050 1050 Pa.
- :: Water Tightness – 9A (600Pa) & E1050: 1050 Pa.
- :: Wind Resistance – EA2400 & 5A: 2000 Pa.

Operation Performance:

- :: Tested to BS 6375 - 2: 2009.
- :: Resistance to racking – Class 3.
- :: Resistance to static torsion – Class 3.
- :: Resistance to repeated opening and closing – Class3 (20,000 cycles).
- :: Operating forces – Class 1.
- :: BS 6375 – 3:2009, basic security test – Pass.

Decoral

The Decoral system is a process of applying a wood grain effect onto aluminium profiles. Decoral has all the aesthetics and texture of wood but has a major advantage in that there is none of the associated maintenance costs. We offer a 10 year guarantee on wood grain finishes and due to popular demand our portfolio of wood grain options is ever increasing.

Available finishes include:

Mahogany, golden oak, dark oak, natural oak, teak, raw teak, teak softwood, chestnut, oregon, natural oregon, yellow oregon, oregon pine, knotty pine, natural maple and cinnamon.